

Product Specifications

FlashTrak. Wireless Refrigerator Monitoring System (WRM)



Probe Measurement Range	-40°F to 185°F (-40°C to 85°C)
Operating Range	-22°F to 140°F (-30°C to 60°C)
Programmable Sample Interval	1 to 60 minutes
Display Resolution	0.1°F / °C
Accuracy Within Normal Operating Range	±1.0°F from 14°F to 77°F (±0.5°C from -10°C to 25°C)
Power Source	110V AC / 220V AC
Backup Battery	5 AA NiCad batteries
Operating Life (on Backup Battery)	30 hours
Data Capacity (on Backup Battery)	6400 data points, 1M data points on optional SD card
Battery Shelf Life (non-operating)	18 months
Weight	21.9 oz (621 g)
Dimensions	5.1 in x 7.1 in x 2.0 in (129.5mm x 180.3mm x 50.8mm)
Casing	ABS Plastic
LCD Display	2 lines, 60 characters per line, backlit red, green & blue
Alarm	Audio buzzer
Buttons	Green - Info Red - Alarm/cancel
Data Communication	Cell phone data service GSM/3G (backup over Wi-Fi)
Certification	FCC, WEEE, CE Mark, RoHS compliant



Model 22129

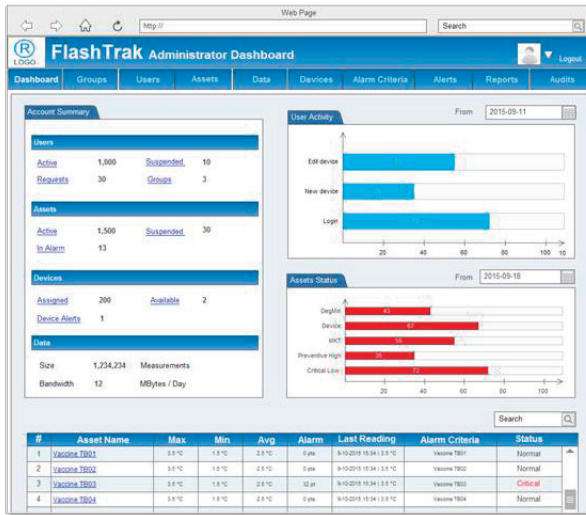
- Two channel logging capability
- Includes one sensor with blunt tip probe
- Optional second sensor: 20963 (blunt tip) or 20964 (glycol bottle)
- Data transmitted through cellular connections or Wi-Fi
- Cloud-based application for system administration, data collection and analysis

DeltaTrak manufactures products under an ISO 9001:2008 registered quality management system

SS0195 Page1 of 2 16F1



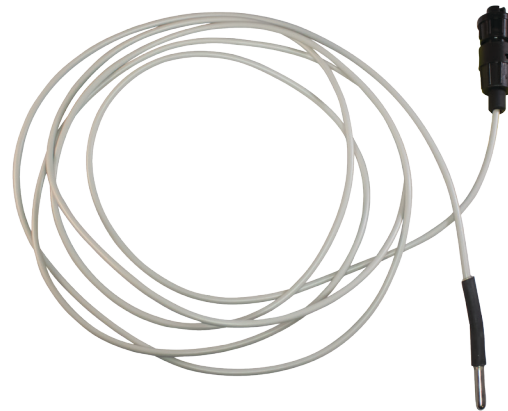
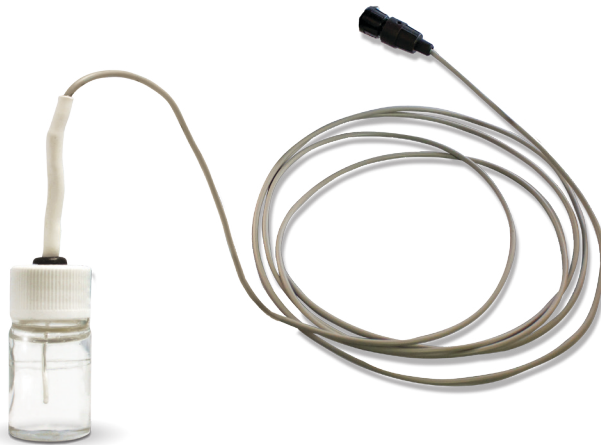
Product Specifications



Cloud based application

The Wireless Refrigerator Monitoring system is a 24/7 remote monitoring system which allows users to access time and temperature data anywhere in the world. The centralized cloud based administration system is 21 CFR Part 11 compliant and provides automated notification of alarms. The web portal requires a password to review temperature history and excursions. All data can be exported as needed by an administrator for data analytics.

FlashTrak WRM - Wireless Refrigerator Monitoring System Probes



Model 20964	WRM Sensor In Glycol Bottle
Sensor	Thermistor in glycol bottle
Bottle	5mL PETG* sterile bottle – 21CFR compliance information available, 9.84 ft./3m cable
Glycol Buffer	Propylene glycol (GRAS** classified)
Measurement Range	-40°F to 104°F (-40°C to 40°C)

Model 20963	WRM Blunt Tip Probe
Probe Size	0.15in Dia x 0.98in L (3.8mm Dia x 25mm L), 3.28 ft (1m) Teflon cable
Measurement range	-40°F to 185°F (-40°C to 85°C)

*Polyethylene terephthalate copolymer **Generally Recognized As Safe